

NMSU Doña Ana Community College **DACC Institutional Student Success Report**

Table 1. DACC New Degree-Seeking Students

	2012 Fall	2013 Fall	2014 Fall	2015 Fall	2016 Fall
New Student Headcount	1,511	1,338	1,214	1,116	1,338
Full-time	1,202	1,077	1,001	937	1,127
Percent Full-time	80%	80%	82%	84%	84%
Part-time	309	261	213	179	211
Percent Part-time	20%	20%	18%	16%	16%
	2012 Fall	2013 Fall	2014 Fall	2015 Fall	2016 Fall
Female	51%	52%	51%	54%	53%
Male	49%	48%	49%	46%	47%
Hispanic	80%	83%	82%	82%	82%
Not Hispanic	20%	17%	18%	18%	18%
	2012 Fall	2013 Fall	2014 Fall	2015 Fall	2016 Fall
Pell Recipient	1,053	962	830	754	860
Percent Pell Recipient	70%	72%	68%	68%	64%
Percent of Pell who are FT	83%	84%	87%	87%	88%
Percent of Pell who are PT	17%	16%	13%	13%	12%
	2012 Fall	2013 Fall	2014 Fall	2015 Fall	2016 Fall
First Generation	1069	968	844	757	930
Percent First Generation	71%	72%	70%	68%	70%
Percent of First Gen who are FT	77%	78%	80%	82%	82%
Percent of First Gen who arePT	23%	22%	20%	18%	18%
	2012 Fall	2013 Fall	2014 Fall	2015 Fall	2016 Fall
Placed in Dev. Math or Dev. English	93%	94%	93%	91%	92%
Placed in Dev. English	77%	79%	79%	78%	80%
Placed in Dev. Math	87%	89%	86%	82%	84%
	2012 Fall	2013 Fall	2014 Fall	2015 Fall	2016 Fall
South County Students	360	298	258	263	303
Percent South County Students	24%	22%	21%	24%	23%

Table 3. New Student Fall-to-Spring Persistence and Fall-to-Fall Retention Rates

	N	Fall-Spring Persistence		Fall-Fall Retention	
		Persisted	% Persisted	Retained	% Retained
01 New Students					
2012 Fall	1,511	1,087	72%	832	55%
2013 Fall	1,338	984	74%	749	56%
2014 Fall	1,214	910	75%	735	61%
2015 Fall	1,116	794	71%	649	58%
2016 Fall	1,338	1,030	77%	800	60%
02 Full-Time					
2012 Fall	1,202	935	78%	712	59%
2013 Fall	1,077	854	79%	652	61%
2014 Fall	1,001	793	79%	646	65%
2015 Fall	937	699	75%	566	60%
2016 Fall	1,127	898	80%	691	61%
03 Part-Time					
2012 Fall	309	152	49%	120	39%
2013 Fall	261	130	50%	97	37%
2014 Fall	213	117	55%	89	42%
2015 Fall	179	95	53%	83	46%
2016 Fall	211	132	63%	109	52%
04 Females					
2012 Fall	778	594	76%	471	61%
2013 Fall	694	534	77%	430	62%
2014 Fall	618	496	80%	404	65%
2015 Fall	598	430	72%	355	59%
2016 Fall	706	545	77%	430	61%
05 Males					
2012 Fall	733	493	67%	361	49%
2013 Fall	644	450	70%	319	50%
2014 Fall	596	414	69%	331	56%
2015 Fall	518	364	70%	294	57%
2016 Fall	632	485	77%	370	59%

Table 3. New Student Fall-to-Spring Persistence and Fall-to-Fall Retention Rates

	N	Fall-Spring Persistence		Fall-Fall Retention	
		Persisted	% Persisted	Retained	% Retained
06 Hispanics					
2012 Fall	1,214	880	72%	681	56%
2013 Fall	1,106	823	74%	627	57%
2014 Fall	1,000	764	76%	630	63%
2015 Fall	910	642	71%	531	58%
2016 Fall	1,102	850	77%	677	61%
07 Not Hispanic					
2012 Fall	297	207	70%	151	51%
2013 Fall	232	161	69%	122	53%
2014 Fall	214	146	68%	105	49%
2015 Fall	206	152	74%	118	57%
2016 Fall	236	180	76%	123	52%
08 Pell Recipients					
2012 Fall	1,053	820	78%	627	60%
2013 Fall	962	745	77%	547	57%
2014 Fall	830	669	81%	533	64%
2015 Fall	754	576	76%	466	62%
2016 Fall	860	708	82%	556	65%
09 First Generation					
2012 Fall	1,069	750	70%	582	54%
2013 Fall	968	692	71%	524	54%
2014 Fall	844	628	74%	505	60%
2015 Fall	757	524	69%	422	56%
2016 Fall	930	705	76%	550	59%



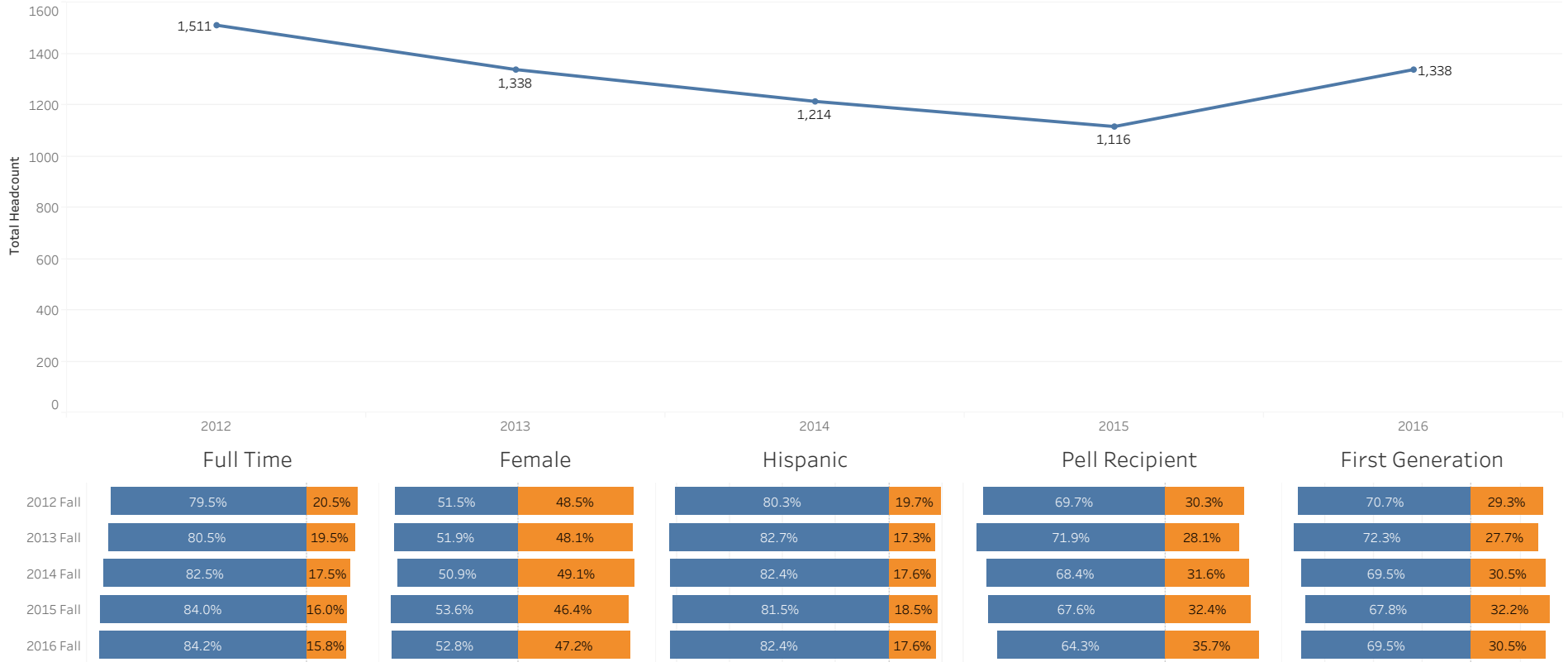
Dona Ana Community College
Institutional Student Success Report



Full Time All Female All Hispanic All Pell Recipient All First Generation All

Reset

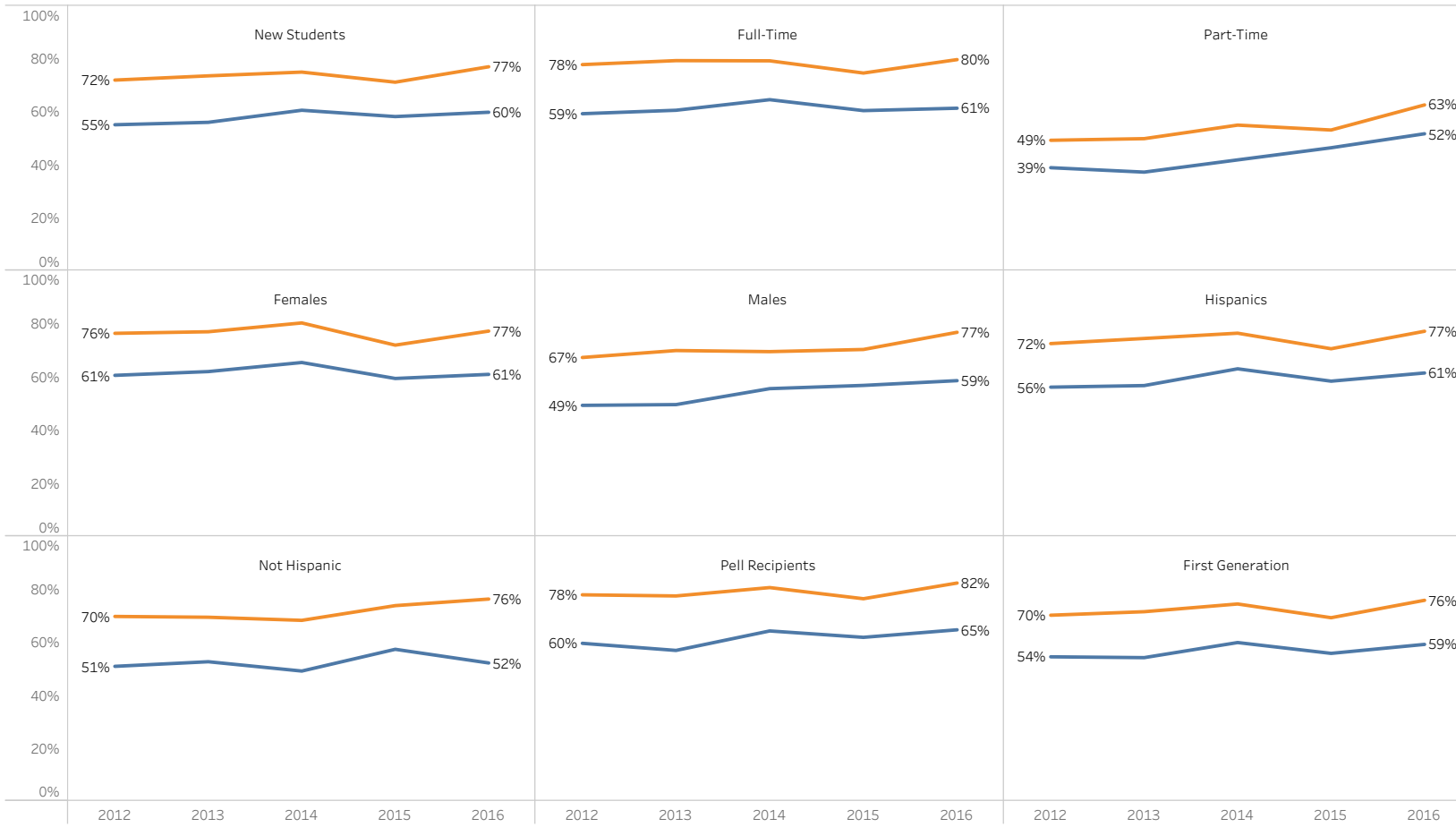
DACC New Degree-Seeking Students Fall Enrollment



Note: These are not IPEDS cohorts.



DACC New Degree-Seeking Students Persistence/Retention Rate



Color legends Retention Chart
█ Fall to Spring Persistence R..
█ Fall to Fall Retention Rate

How many columns do you want?
3

- Student Type
- Females
 - First Generation
 - Full-Time
 - Hispanics
 - Males
 - New Students
 - Not Hispanic
 - Part-Time
 - Pell Recipients

Note: 1. These are not IPEDS cohorts.



Dona Ana Community College
Institutional Student Success Report

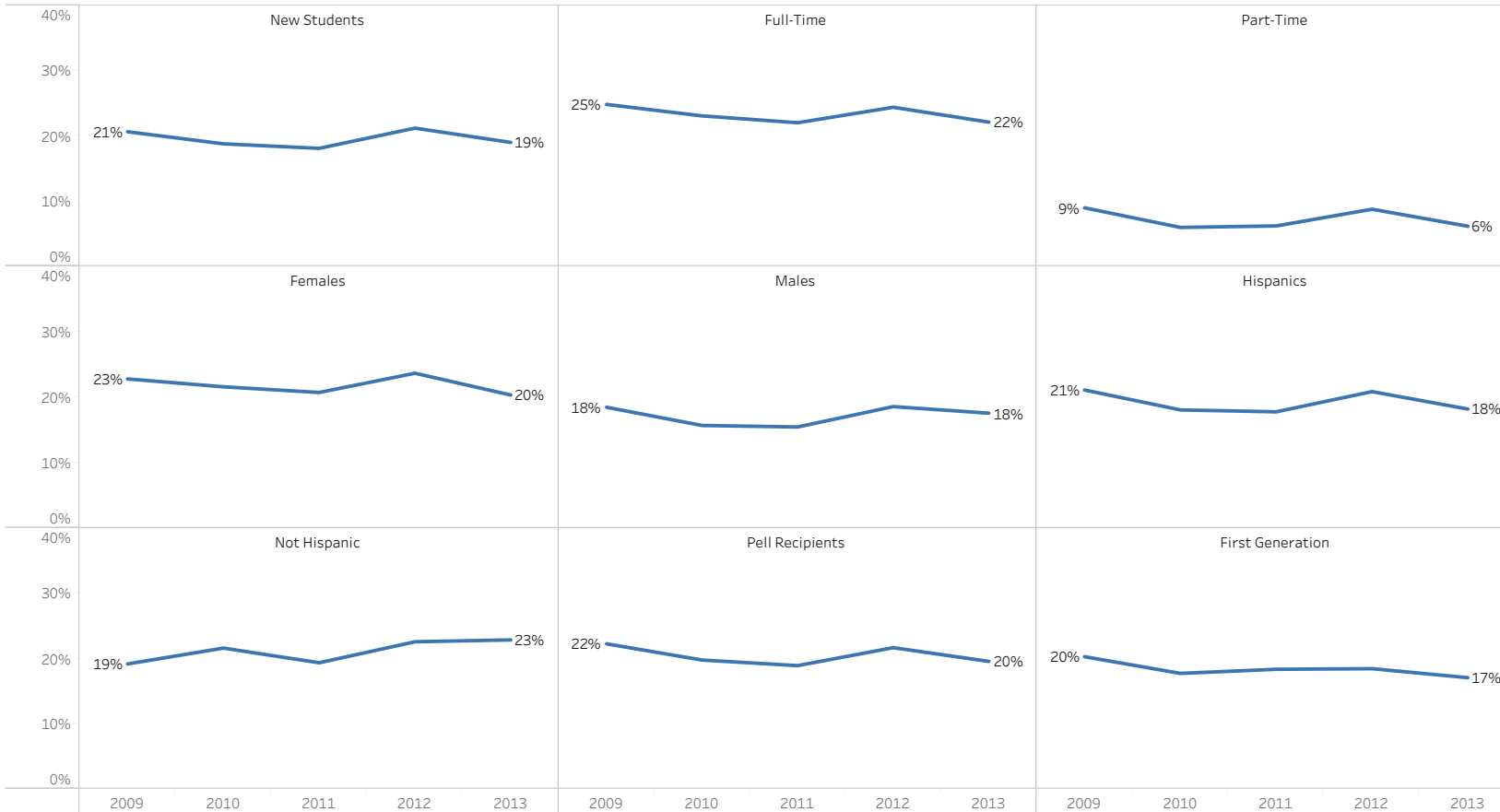


DACC New Degree Seeking Students who transferred to a 4 year institution or earned associated degrees (within 200% of time expected to graduate)

Color legend for Transfer to 4 ye..
■ Transfer Or Asso 200 Rate

How many columns do you want?
3

- Student Type
- Females
 - First Generation
 - Full-Time
 - Hispanics
 - Males
 - New Students
 - Not Hispanic
 - Part-Time
 - Pell Recipients



Note: 1. These are not IPEDS cohorts.

..

Fall 2014 Students New to an Associate Program: Student Outcome by Spring 2017

	Headcount	Percent		Headcount	Percent
Earned Major Associate & Certificate, and Transfer to Other College	9	1%	Earned Major Associate	189	17%
Earned Major Associate & Transfer to Other College	32	3%			
Earned Major Associate & Certificate	33	3%			
Earned Major Associate, Still Enrolled	36	3%			
Earned Major Asso.	79	7%			
Transfer to Other College, Earned Major Certificate	1	0%	Transfer to Other College	77	7%
Transfer to Other College, Other Major Associate	16	1%			
Transfer to Other college	60	5%			
Earned Major Certificate, and Other Major Associate	3	0%	Earned Major Certificate	55	5%
Earned Major Certificate, Still enrolled	16	1%			
Earned Major Cert.	36	3%			
Earned Other Major Associate, Still Enrolled	20	2%	Other Associate	41	4%
Earned Other Major Associate	21	2%			
Current Major	113	10%	Still Enrolled	180	16%
Other DA Major	67	6%			
Not enrolled	576	52%	Not Enrolled	576	52%
FA14 All Students New to an Associate Program Cohort Total	1118	100%		1118	100%

All Students New to an Associate Program at DACC Fall 2014 Cohort

